

Ontario Water Works Association

Student Chapters

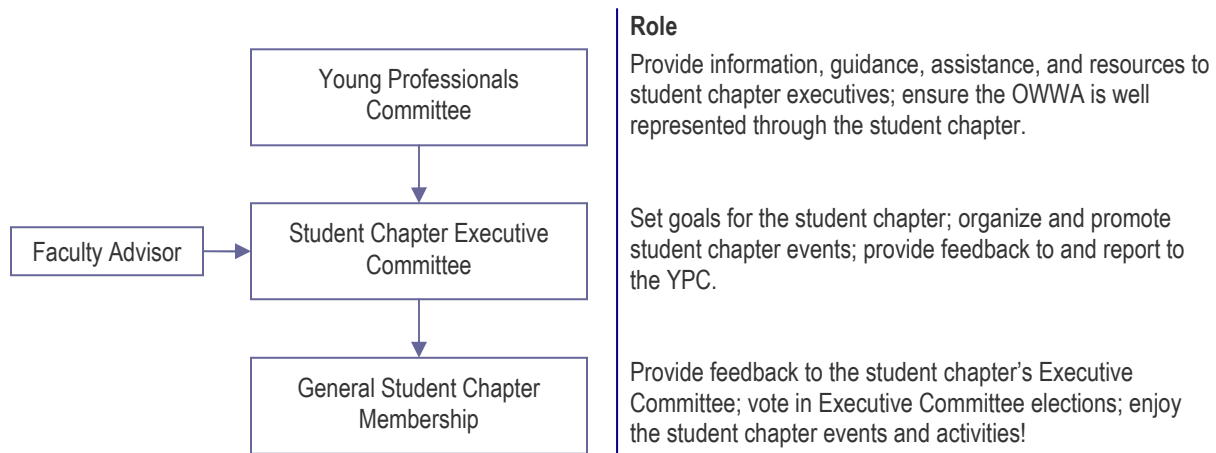
Ten easy steps to establishing a student chapter

Why should I establish an OWWA student chapter at my school?

OWWA student chapters provide students with opportunities to learn about water and the water industry, meet other like-minded students, and network with water industry professionals. Establishing an OWWA student chapter at your school provides you with the resources you need to organize fun activities like seminars, plant tours, and social events, and allows for endless opportunities to build leadership skills, expand your technical knowledge, and network with people in the water industry.

Who will help me get started?

The OWWA Student Chapter Program is managed through the OWWA's **Young Professionals Committee (YPC)**. The YPC provides each student chapter with a "Buddy", who acts as a mentor to the student chapter. Your Buddy will provide you with the information, guidance, assistance, and resources that you need to get your chapter started and to keep it running smoothly. The typical structure of an OWWA student chapter is shown below.



How do I establish an OWWA student chapter at my school?

1. Contact the YPC to have a Buddy assigned to your chapter: students@owwa.ca.
2. Find a faculty advisor and some interested students who will form your Executive Committee.
3. Have the members of your Executive Committee sign up for OWWA membership.
4. Complete your student chapter constitution and by-laws.
5. Set goals for your chapter, and determine the number and types of activities you will organize in your first year.
6. Prepare a budget for the upcoming school year's student chapter activities.
7. Submit your constitution and by-laws to your Student Chapter Buddy, along with your student chapter's name, list of members, proposed budget, and university or college requirements.
8. Obtain recognized club status from your school (if applicable).
9. Advertise your student chapter.
10. Start planning and organizing activities!

Refer to **The OWWA Student Chapter Survival Guide** for detailed instructions on how to complete these steps. And don't forget to talk to your Student Chapter Buddy if you have any questions! He or she can help you with your student chapter application package and can provide you with templates and examples of any of the documents listed above.

For more information, visit our website, www.owwa.com, or contact the OWWA's YPC: students@owwa.ca